

**Tidal Engineering Controller Training Class**  
**Includes VersaTenn V, ProTouch and Synergy Controllers**  
**April 4th, 2006**

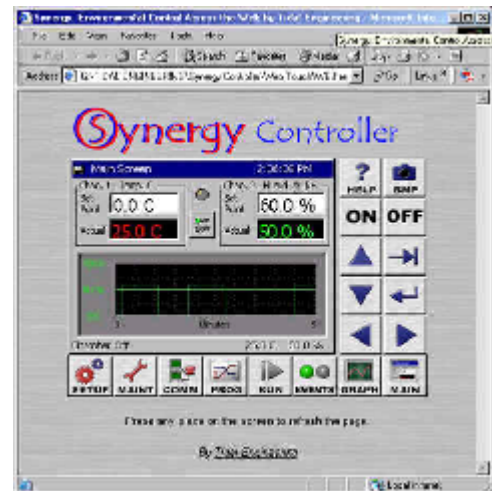
**Introduction**

Tidal Engineering is offering a programming, operation and maintenance course on our touch screen controllers in Randolph NJ. The course will cover the VersaTenn V, Synergy and ProTouch line of environmental chamber controllers. With the daylong class, you will receive a free *Web Touch* registration key for a Tidal Controller and a *Tidal Engineering fleece jacket*, perfect for New Jersey weather in March.

The fee for the class is \$1200.00. The class includes Dunkin Donuts in the morning and a Panera lunch in the afternoon.



*Complimentary  
Tidal Engineering Fleece Jacket*



*Complimentary  
Web Touch Interface Key*

**Synopsis**

- 1.0 INTRODUCTION
  - 1.1 Company Information, Assistance and Warranty
- 2.0 SPECIFICATIONS
- 3.0 CHAMBER / CONTROLLER POWER-UP
- 4.0 FRONT PANEL
  - 4.1 Synergy Interface Panel Layout
  - 4.2 Front Panel Operator Interface
  - 4.3 Touch Screen
  - 4.4 LCD Screen
  - 4.5 Function Keys
- 5.0 NAVIGATION SCREENS - A Brief Overview
- 6.0 SETUP AND CONFIGURATION
  - 6.1 Setup Directory Table
  - 6.2 Calibration
  - 6.3 PID
  - 6.4 Special Functions
  - 6.5 L - Values

- 6.6 Settings List
- 6.7 Device Primitives and Logic Flow Charts
- 6.8 LCD Settings
- 6.9 Chamber Setup
- 6.10 Output Mappings by Chamber Type
- 6.11 Logging
- 6.12 Logging Sequence of Operation
- 6.13 Panel Lock
- 6.14 Languages
- 7.0 MAINTENANCE DIRECTORY
  - 7.1 Operator Interface
  - 7.2 Alarm Functions
  - 7.3 Utilities
- 8.0 COMMUNICATIONS DIRECTORY
  - 8.1 Operator Interface
    - 8.1.1 RS-232
    - 8.1.2 RS-485
    - 8.1.3 IEEE 488
    - 8.1.4 Ethernet
    - 8.1.5 TCP/IP
    - 8.1.6 Web
  - 8.2 Synergy Web Server
  - 8.3 Software Applications and Sample Networks
    - 8.3.1 Synergy SimpleComm Communications Software
    - 8.3.2 Synergy Manager PC Based Chamber Control Software
    - 8.3.3 Ethernet MAC Address
    - 8.3.4 Sample Networks
- 9.0 PROGRAMMING THE CONTROLLER
  - 9.1 Loading a File: From Storage Card, USB Hard Disk or Floppy
  - 9.2 Creating a New Program: Add Step Wizard Feature
  - 9.3 Step Type Descriptions
  - 9.4 Synergy Program Sheet
  - 9.5 Copying, Editing and Deleting a Step
  - 9.6 Saving a Program
  - 9.7 Running a Program
- 10.0 MANUAL OPERATION
- 11.0 EVENTS DIRECTORY
  - 11.1 Events Outputs Screen
  - 11.2 UUT Module (Unit Under Test)
  - 11.3 Digital Outputs
  - 11.4 Digital Inputs
- 12.0 GRAPH SCREEN
  - 12.1 Temperature / Humidity / Air Temperature
- 13.0 UUT MODULE (UNIT UNDER TEST) DATA ACQUISITION
  - 13.1 UUT Overview
  - 13.2 Setup Procedure
- 14.0 CASCADE TEMPERATURE CONTROL
  - 14.1 Description
  - 14.2 Installing Cascade Software
  - 14.3 Configuring Cascade Software
  - 14.4 Using Cascade Mode
- 15.0 TURBO HUMIDITY
  - 15.1 Turbo Humidity Introduction
  - 15.2 Turbo Humidity Use
- 16.0 APPENDIX A RESOURCES
  - 16.1 Web Site Resources
  - 16.2 Other Documents
- 17.0 APPENDIX B OLYMPIC BOARD DIAGRAM
- 18.0 APPENDIX C SYNERGY COMMUNICATIONS COMMAND SET
- 19.0 APPENDIX D INSTALLATION AND WIRING

**About Tidal Engineering**

Headquartered in Randolph, NJ, Tidal Engineering Corporation has been designing and building award-winning embedded hardware and software for test and measurement and data acquisition applications since 1992. The company further provides product development services together with engineering support, and is recognized for technical expertise in such areas as Embedded IEEE 488, and turnkey SCADA (Supervisory Control and Data Acquisition) systems. Tidal's products are available exclusively through ADI American Distributors Inc., an ISO-9002 certified distributor of electronic and electromechanical components and assemblies.

Tidal Engineering Corporation  
2 Emery Avenue  
Randolph, NJ 07869  
Tel: 973/328-1181  
Fax: 973/328-2302  
[www.TidalEng.com](http://www.TidalEng.com)  
[info@tidaleng.com](mailto:info@tidaleng.com)