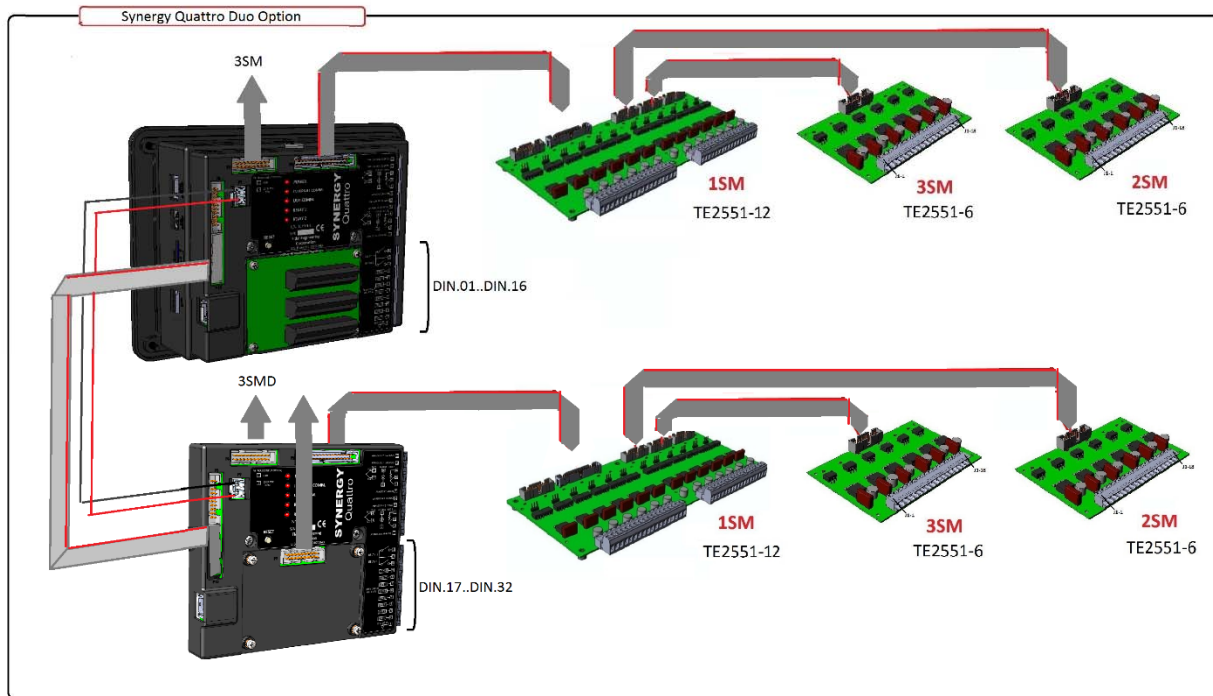


## Synergy Quattro Duo Expansion



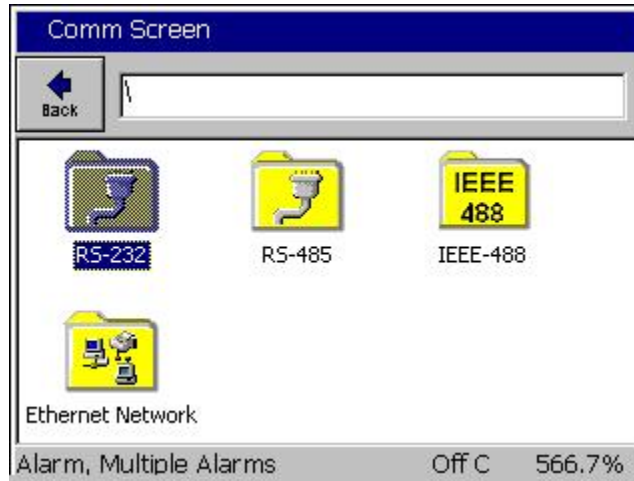
### Introduction

For some large retrofits, for Vehicle Chambers for example, the standard 32 Outputs and 16 Inputs on the Synergy Quattro 2 are not enough.

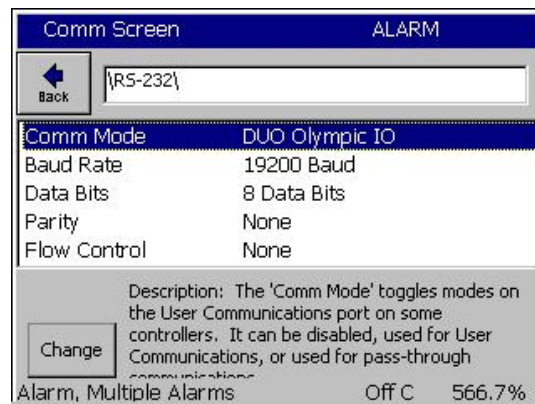
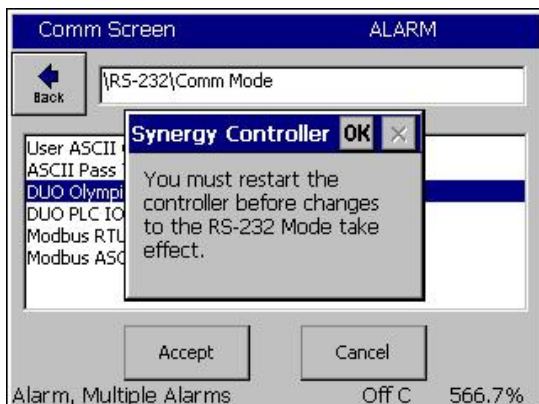
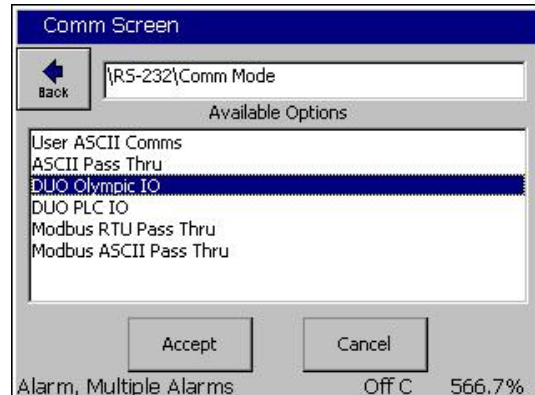
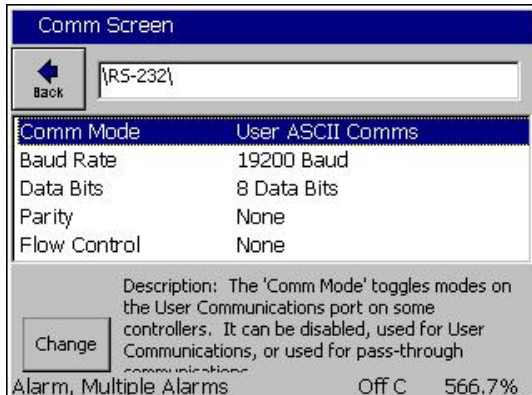
The Synergy Quattro Duo option provides for double the I/O capability of the regular Synergy Quattro 2. This option is supported by Synergy Quattro, Synergy Quattro 2, and Synergy Quattro Plus.

Input/Output	Synergy Quattro	Quattro Duo
Digital Outputs (1SM, 2SM, 3SM)	32	64
Digital Inputs (with TE2251-4 Expansion)	16	32
RTD/Thermocouple/Current	2	4
UUT Sensors (T-Type Thermocouples)	64	128
Analog Inputs (with TE2251-4 Expansion)	10	20
Analog Outputs	2	4
Alarm Relays	2	4

The parameters for Synergy Duo Mode expansion setup are in the RS-232 Folder on the COMM screen as shown below.



Change Comm Mode from **User ASCII Comms**, the default, to **DUO Olympic IO**. Note that a Reboot/Restart is required for the change to take effect.





## About the Synergy Family

Tidal Engineering's Synergy Controllers, the ¼ DIN Synergy Nano, Synergy Micro 2 and the Synergy Quattro provide state-of-the-art usability and connectivity for environmental test control and data acquisition. They combine the functions of a chamber controller and a data logger and are designed to improve test efficiency by supporting both factory automation and test and measurement protocols and standards.

Synergy Controller feature highlights includes:

- ➔ Color touch screen
- ➔ Ethernet, RS-232 and GPIB communications
- ➔ Built in 100 MB Data logger with USB drive support
- ➔ Data Acquisition, up to 64 T-type thermocouples (Optional)
- ➔ Built-in Web Server for remote control; WebTouch Remote™
- ➔ Compatible with Synergy Manager for PC based control, monitoring and programming.
- ➔ Built-in FTP Server for factory automation and test and measurement applications

For more information regarding these controllers please see the full Synergy Controller Technical Manual on our website at <http://www.tidaleng.com/synergy.htm>

## About Tidal Engineering

Headquartered in Randolph, NJ, Tidal Engineering Corporation has been designing and building award-winning embedded hardware and software for test and measurement and data acquisition applications since 1992. The company is recognized for technical expertise in such areas as Embedded IEEE 488, and turnkey SCADA (Supervisory Control and Data Acquisition) systems.

Tidal Engineering Corporation  
2 Emery Avenue  
Randolph, NJ 07869  
Tel: (973) 328-1173  
Fax: (973) 328-2302  
[www.TidalEng.com](http://www.TidalEng.com)

