

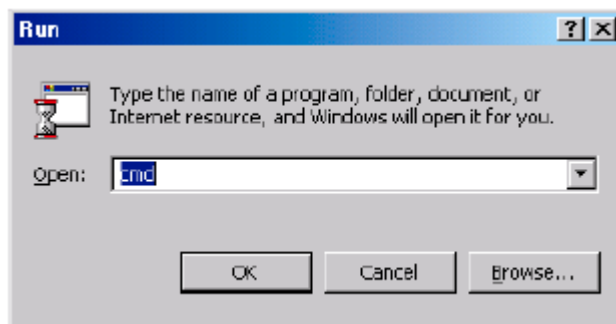
Determine the MAC Address of your VersaTenn V Controller

Network administrators may require the MAC address of an embedded device to administrate the network.

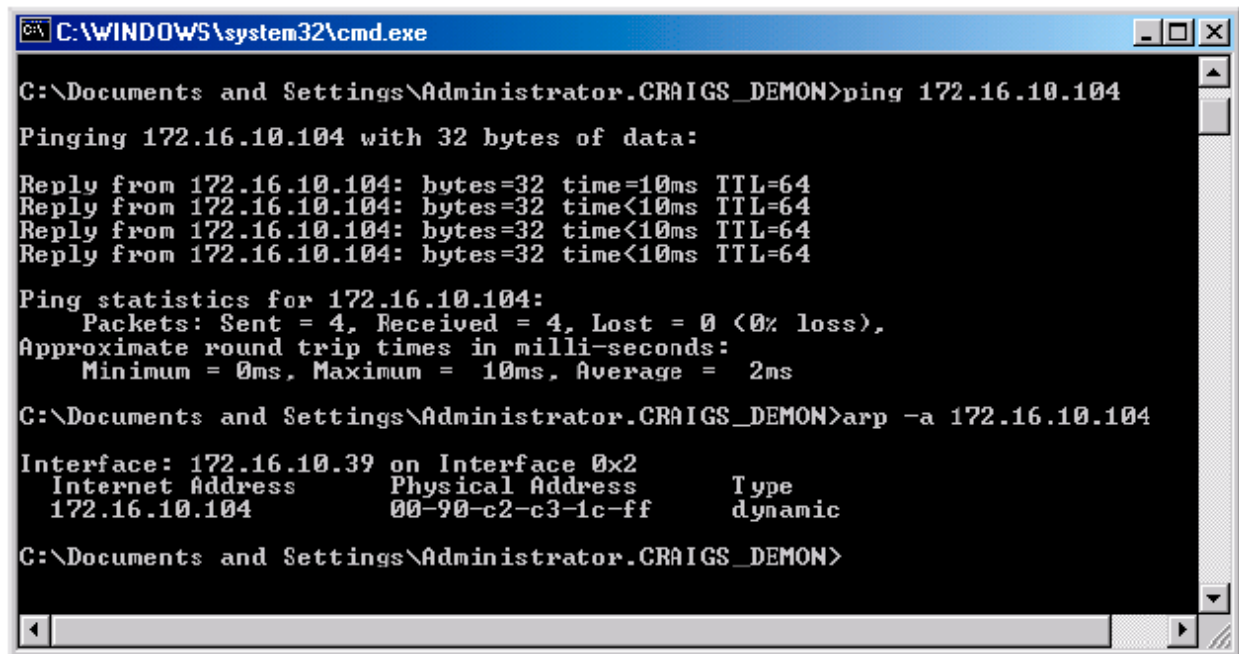
One way to determine the MAC address of your VersaTenn V unit is to use the "arp" command available on Windows PCs. To use this method, the PC must reside on the VersaTenn V's network.

To use the "arp" command follow these steps:

1. Connect your VersaTenn V unit to your network and apply power.
2. Determine the IP address of the VersaTenn V unit by pressing the COMM button and navigate to the Ethernet Folder. The "IP ADDRESS" property is displayed. Note the IP address.
3. Open a "cmd.exe" window on the desktop using the /Start/Run Command and typing "cmd" in the Open window. Then Click "OK".



4. Verify the network connection to the VersaTenn V by typing: "ping xxx.xxx.xxx.xxx". Note: fill in the VersaTenn V unit's IP address in place of the array of x's.
5. In the cmd window type "arp -a xxx.xxx.xxx.xxx" again filling in the VersaTenn V unit's IP address in place of the array of x's.
6. The "arp" command will respond with the Internet and the Physical Addresses (MAC address) of the VersaTenn V unit. The MAC address of the unit tested for this application note is 00-90-C2-C3-1C-FF as shown below.



```
C:\WINDOWS\system32\cmd.exe
C:\Documents and Settings\Administrator.CRAIGS_DEMON>ping 172.16.10.104
Pinging 172.16.10.104 with 32 bytes of data:
Reply from 172.16.10.104: bytes=32 time=10ms TTL=64
Reply from 172.16.10.104: bytes=32 time<10ms TTL=64
Reply from 172.16.10.104: bytes=32 time<10ms TTL=64
Reply from 172.16.10.104: bytes=32 time<10ms TTL=64
Ping statistics for 172.16.10.104:
    Packets: Sent = 4, Received = 4, Lost = 0 (0% loss),
    Approximate round trip times in milli-seconds:
        Minimum = 0ms, Maximum = 10ms, Average = 2ms
C:\Documents and Settings\Administrator.CRAIGS_DEMON>arp -a 172.16.10.104
Interface: 172.16.10.39 on Interface 0x2
Internet Address      Physical Address      Type
172.16.10.104        00-90-c2-c3-1c-ff    dynamic
C:\Documents and Settings\Administrator.CRAIGS_DEMON>
```

About Tidal Engineering

Headquartered in Randolph, NJ, Tidal Engineering Corporation has been designing and building award-winning embedded hardware and software for test and measurement and data acquisition applications since 1992. The company further provides product development services together with engineering support, and is recognized for technical expertise in such areas as Embedded IEEE 488, and turnkey SCADA (Supervisory Control and Data Acquisition) systems. Tidal's products are available exclusively through ADI American Distributors Inc., an ISO-9002 certified distributor of electronic and electromechanical components and assemblies.

Tidal Engineering Corporation
2 Emery Avenue
Randolph, NJ 07869
Tel: 973/328-1181
Fax: 973/328-2302
www.TidalEng.com
info@tidaleng.com