

VersaTenn V Touch Screen Calibration

This Application Note describes the procedure for calibrating the VersaTenn V's touch screen.

This procedure requires:

- a. Windows PC.
- b. "VTV Touch Cal 2.zip" or "VTV Touch Cal 2.exe". These files are available from Lunaire Limited and Tidal Engineering.
- c. One blank floppy disk.

Creating the calibration disk:

1. Unzip "VTV Touch Calibration Image v2_0.ZIP" to "VTV Touch Calibration Image v2_0.exe".
2. Put a blank floppy in your PC and, from your PC, run "VTV Touch Calibration Image v2_0.exe". You should see the screen in figure 1 below.
3. Click OK to create a Calibration disk for the VersaTenn V.

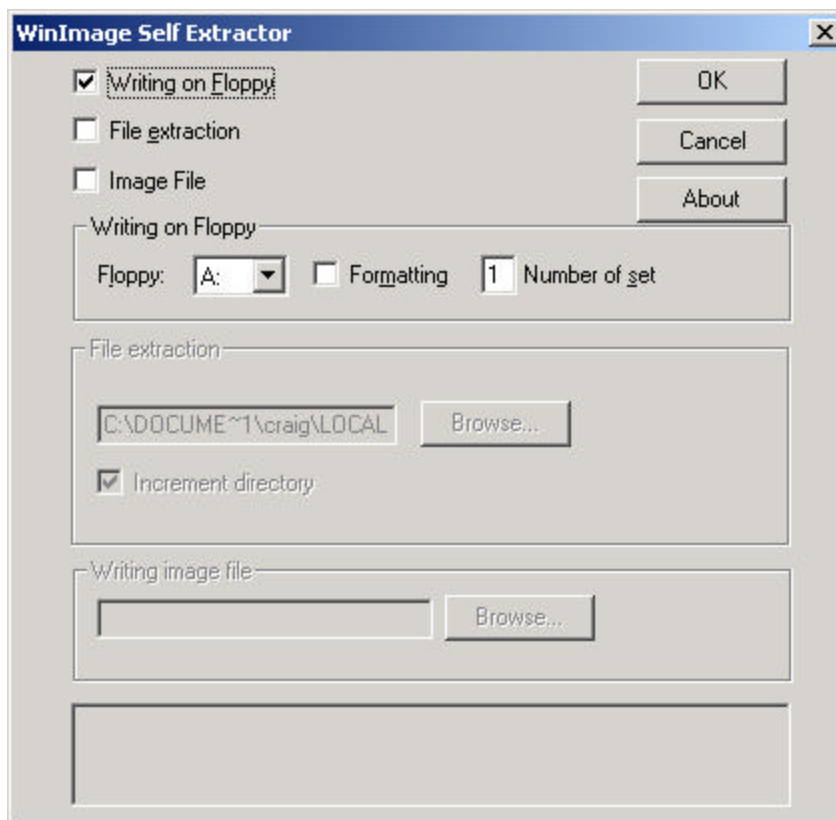


Figure 1 WinImage Self Extractor Program

4. When the program is finished and the disk light goes off, place the calibration disk in the VersaTenn V's disk drive.

Calibrating the touch screen:

1. Restart the VersaTenn V by pressing the reset switch with a paper click (it's above the keyboard connector on the connector panel) or by cycling power.
2. The Calibration program will start and the LCD Display will say "VersaTenn V Touch Screen Cal".
3. Touch a pointer (a stylus from a Pocket PC works great) to the touch screen at the extreme upper left corner of the LCD display.
4. Watch the upper left coordinate message and hold the stylus in the corner until it changes from "Upper Left=Calibrating" to "Upper Left=OK".
5. Next, touch the pointer to the touch screen at the extreme lower right corner of the LCD image.
6. Watch the lower right coordinate message change from "Lower Right=Calibrating" to "Lower Right=OK".
7. Repeat 3 through 6 above.

The touch screen calibration is complete when both lower right coordinate and upper left messages say, "OK".

Now remove the calibration disk from the floppy drive and cycle power to the controller to return to normal operation.

IMPORTANT

Pressing the reset button will not take the touch controller out of calibration mode. You must cycle power to the controller to restore normal operation.