

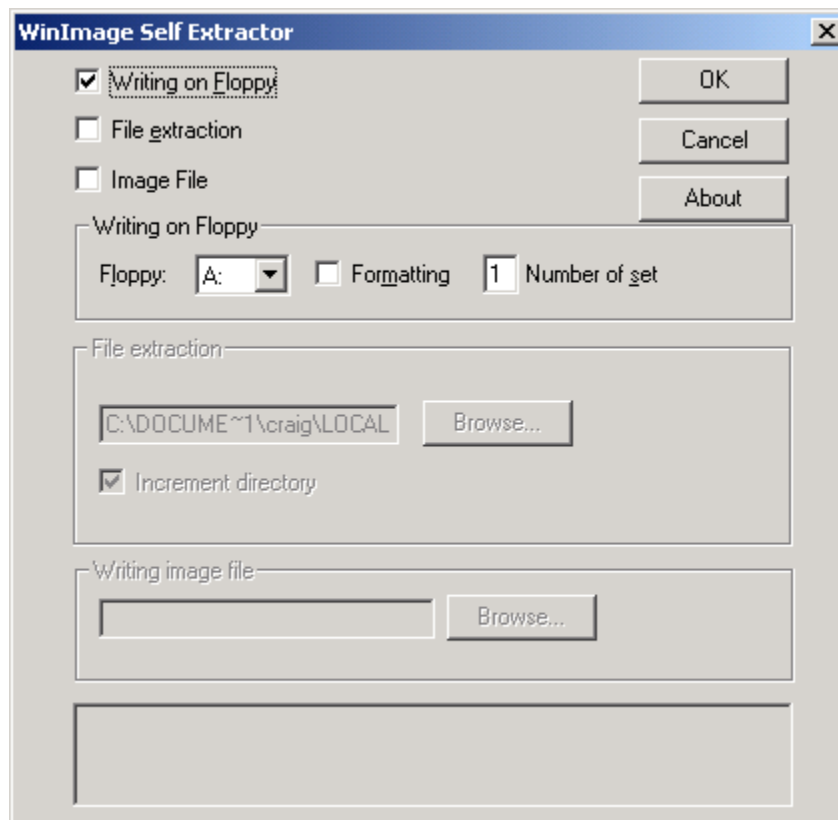
VersaTenn V Floppy Driver Memory Leak and Boot Disk Creation

The VersaTenn V's floppy disk driver consumes memory when polling for media in the drive. This Windows CE problem does not occur when a floppy disk is left in the drive. To prevent "Low Memory" problems, we recommend that you leave a bootable disk in the VersaTenn V's floppy drive. The disk must be a bootable disk; if you use a non-bootable disk the system will lockup during the boot process. This Application Note describes the procedure for creating a bootable system disk for this purpose. Note: This issue was resolved in VTV versions 2.0 and later.

This procedure requires a PC, the file "VTV Boot.zip" or "VTV Boot.exe" and a blank floppy disk. These files are available from Lunaire Limited and Tidal Engineering.

Automatic Creation:

1. Unzip "VTV boot.zip" to "VTV Boot.exe".
2. Put a blank floppy in your PC and run "VTV Boot.exe". You should see the screen below.
3. Click OK to create a bootable disk for the VersaTenn V.



You should leave this floppy in the drive to eliminate low memory problems. The VersaTenn V will start up normally if the power fails.

When you first insert the disk in the floppy drive, you should verify that the VersaTenn V recognized it. To confirm recognition, press the open file button in the Program screen. When the Open dialog box appears, press the arrow next to Storage Card to list available devices. If the floppy drive is recognized, the drop down list will include Floppy in the list. The VersaTenn V polls the Floppy drive every 10 seconds, so recognition may take several seconds.