

Synergy Controller WebTouch Remote™ Version 2



Introduction

All Synergy Controllers including the ¼ DIN Synergy Nano, Synergy Quattro, and Synergy Micro 2 are equipped with a built-in web server using Tidal Engineering’s WebTouch Remote™ technology (Pat. Pending). This technology provides a web browser user interface that is identical to the local touch screen interface on the environmental chamber. Operators can use this feature to remotely monitor chamber settings and readings. Technicians can use this feature for remote troubleshooting.

The Synergy Nano 2 and Synergy Quattro 2 also feature the new WebTouch Remote™ 2. This second-generation remote-control capability using a standard Web browser provides the following improvements over the original WebTouch Remote™:

- Real-time screen refresh.
- Keyboard data entry.

This application note covers the new WebTouch Remote™ 2 feature. See Application Note 7 concerning the original Synergy WebTouch Remote™ feature.

The WebTouch Remote™ Version 2 interface is virtually identical to the local touch screen, just like the original WebTouch Remote™.

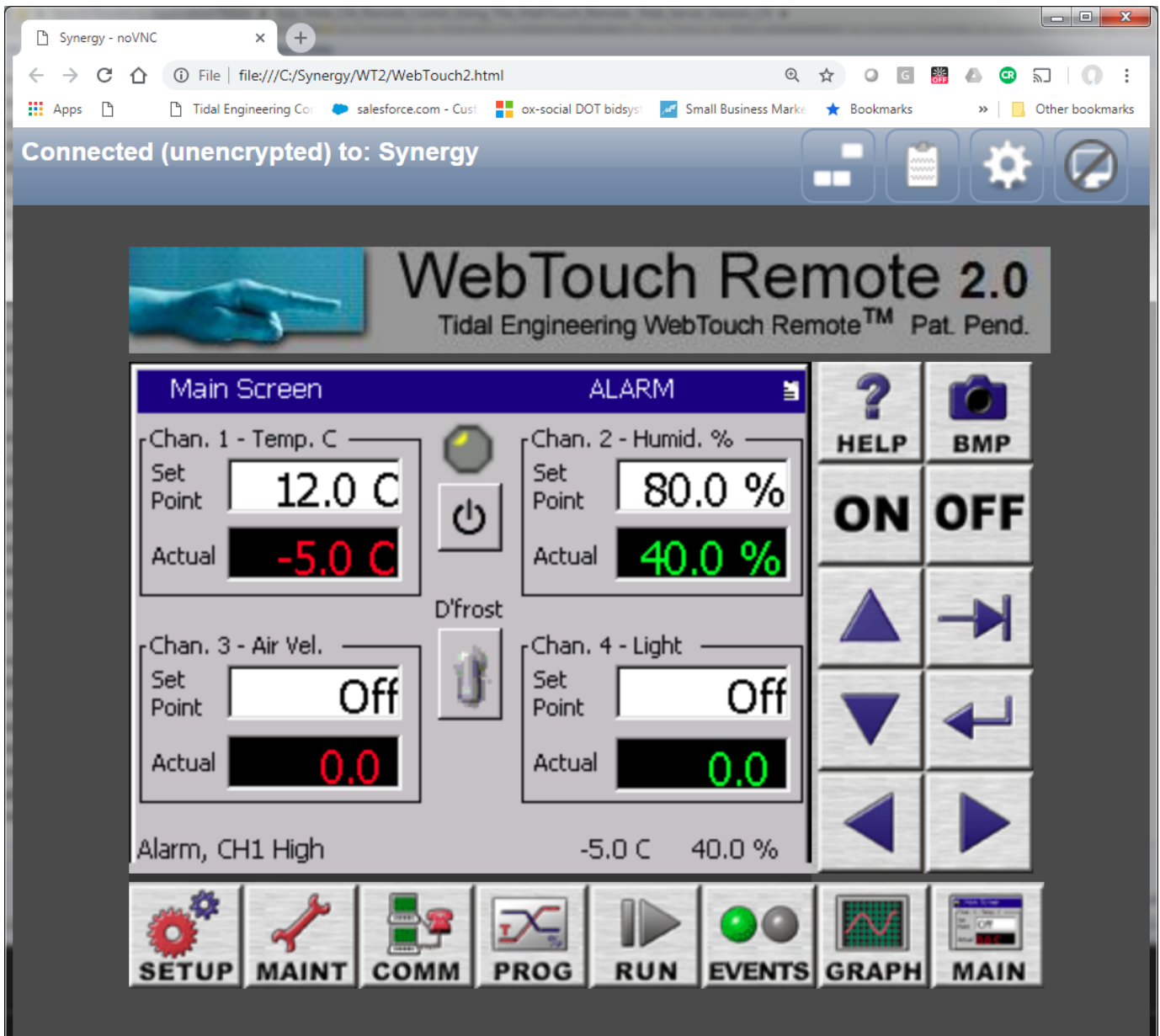


Figure 2 Synergy Controller WebTouch Remote™ Version 2 Interface

The setup and of the WebTouch Remote™ 2 are covered on the following pages.

Setup and Use of Synergy Controller using WebTouch Remote™ 2

The one-time set up for the WebTouch Remote™ 2.0 includes:

- WebTouch2 package download from <https://tidaleng.com>
- Setup a TCP/IP connection using Synergy Controller's 10/100 BaseT Ethernet port.
- Open the WebTouch2 Page
- Enter Host IP Address and Port 5900
- Press Connect

Establishing a TCP/IP connection

The Synergy Controller must be connected to an office or factory network and configured with an IP address and a net mask to provide the remote access and remote control feature of WebTouch Remote™ as well as e-mail, network printing, Synergy Server and other networking features.

IP Configuration by DHCP

With Dynamic Host Configuration Protocol (DHCP), the Synergy Controller gets the IP address configuration automatically from a computer on the network running the DHCP service; the DHCP Server. A DHCP Server stores a list or pool of IP addresses, along with other information (such as gateway and DNS addresses) that it can assign to the devices on the network.

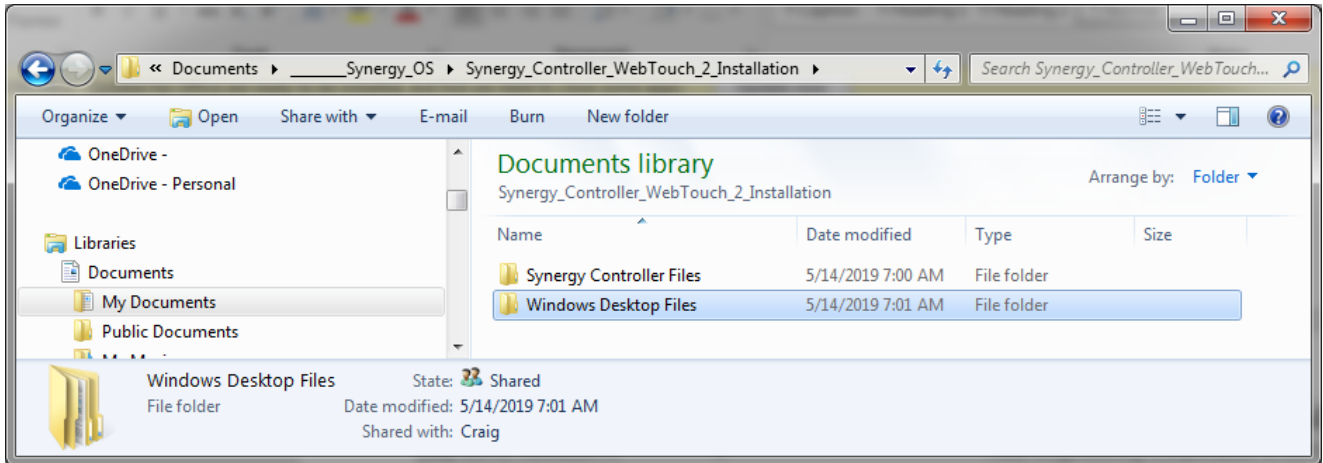
DHCP servers are available on many office and factory network servers. Contact your network administrator to verify that a DHCP server is available and enabled. The Synergy Controller will display the address it was assigned in the Comm/Ethernet screen. If the address is not 0.0.0.0, then it has been assigned an address by the DHCP server automatically.

Static IP Address Assignment

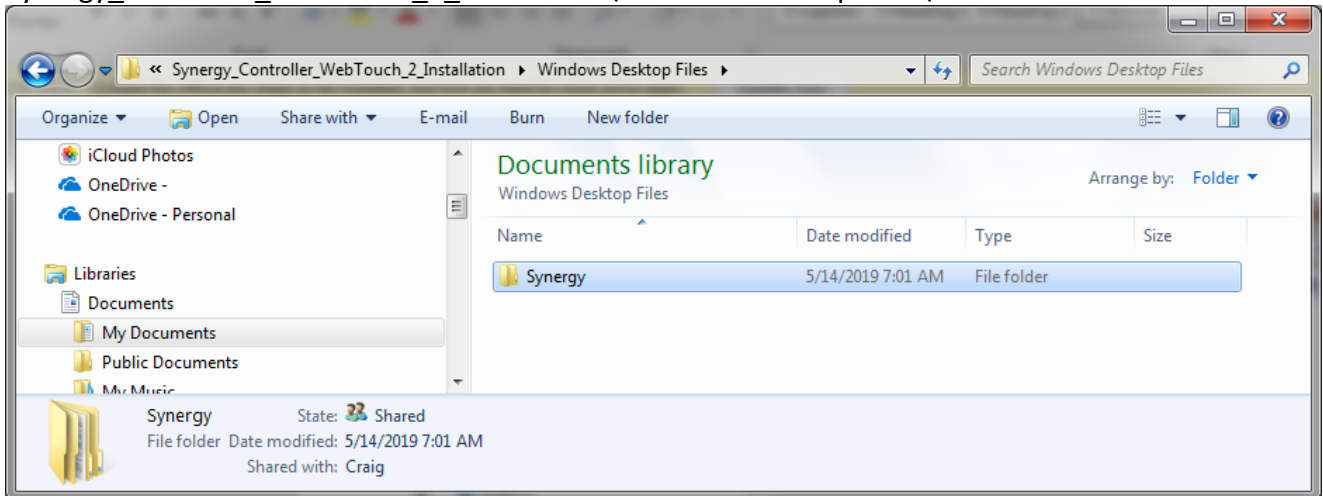
Synergy Controller can also be assigned an IP address manually.

Download the Synergy WebTouch Remote™ 2 files

https://tidaleng.com/downloads/Synergy_Controller_WebTouch_2_Installation.zip and Extract the contents to C: Drive.

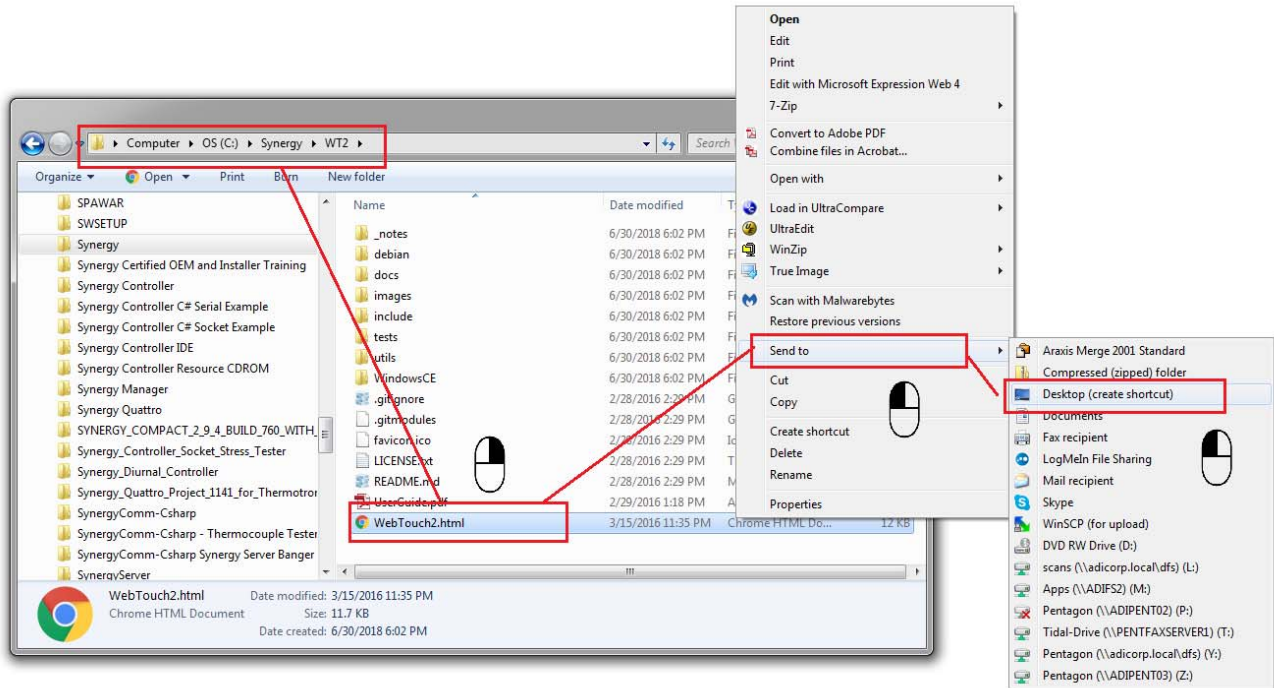


Copy the Synergy Folder from
Synergy_Controller_WebTouch_2_Installation\Windows Desktop Files\ to the C: Drive

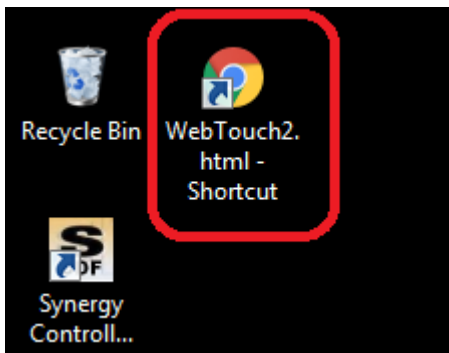


Create a shortcut on the Desktop

To create a Desktop Shortcut, browse to the WT2 folder , click on the WebTouch2.html file with the Right Mouse button,and select **Send file to Desktop (Create Short Cut)** as shown below.

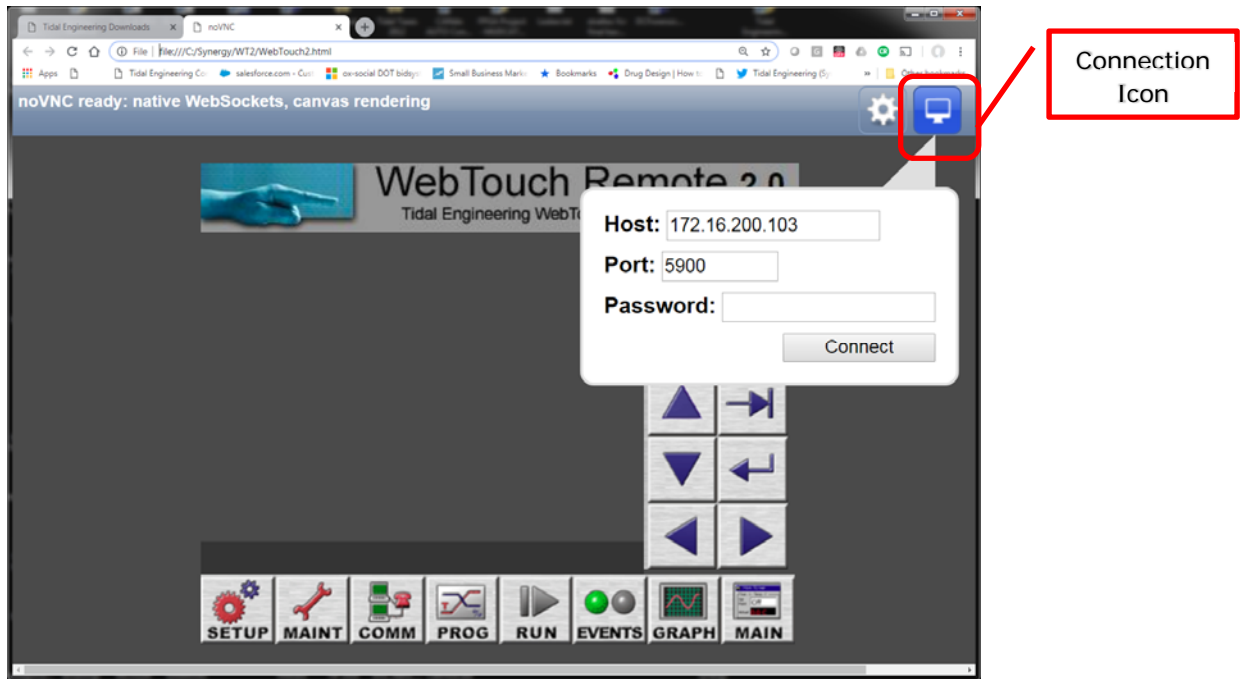


Look for the shortcut on the Desktop

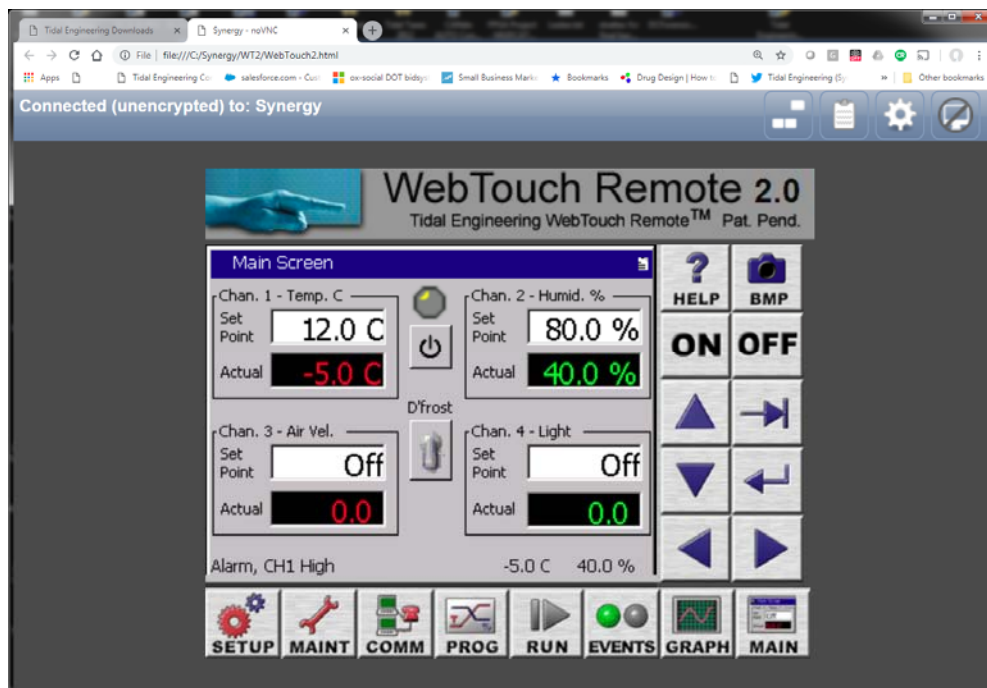


Starting WebTouch Remote™ 2

Use the Desktop shortcut to start WebTouch Remote™ 2. The Google Chrome browser will open as shown below. If the connection window does not open automatically, click the Connect Icon. Type the IP Address of the controller (for example 172.16.200.103) and Port 5900 as shown below. Then Press Connect.



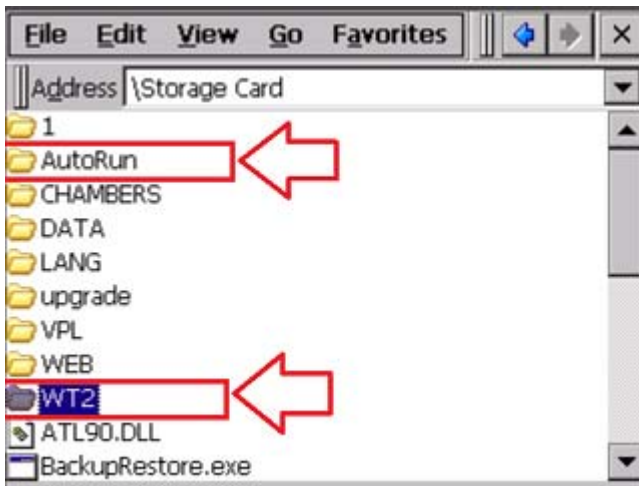
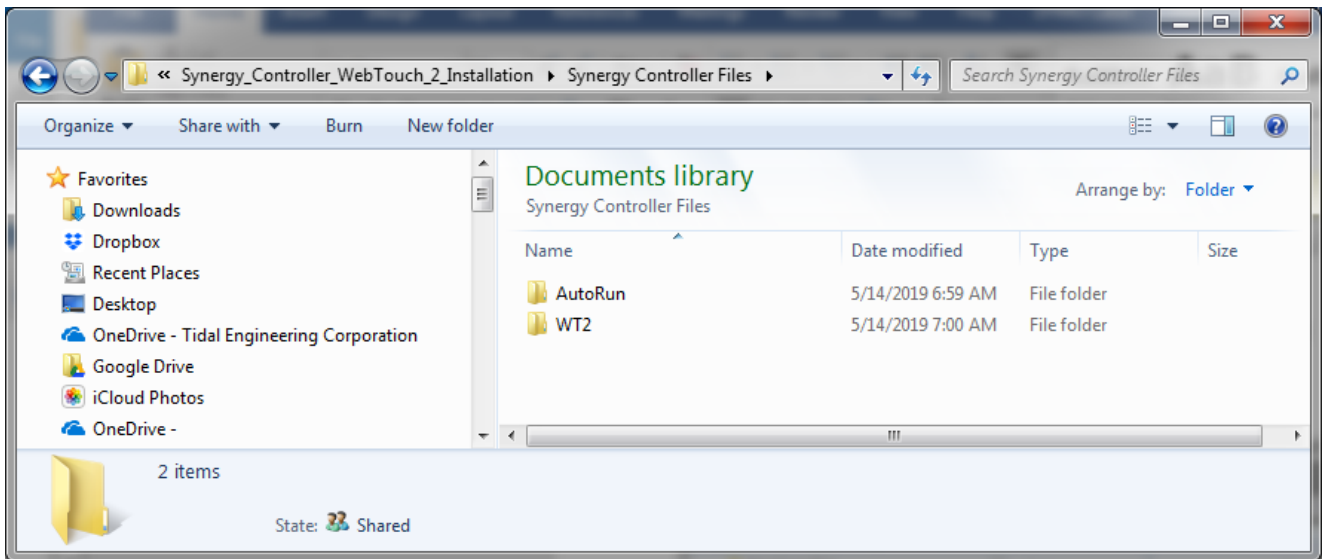
The WebTouch Remote™ 2 browser will refresh with the Synergy Controller screen.



Appendix A Installation on other Controllers - Copying Controller Files

WebTouch Remote 2 is included with all Synergy Quattro 2 and Synergy Nano 2 controllers, Version 5.3.x.

To install the WebTouch Remote 2 on Synergy Micro 2, Synergy Quattro and Synergy Nano Controllers, copy the **AutoRun** and **WT2** folders from the Synergy_Controller_WebTouch_2_Installation Package to the controller using USB Memory Stick and the controller's windows desktop Explorer as shown below.





About the Synergy Controller Family

Tidal Engineering's Synergy Controllers, both the Synergy Micro 2 and the ¼ DIN Synergy Nano provide state-of-the-art usability and connectivity for environmental test control and data acquisition. They combine the functions of a chamber controller and a data logger and are designed to improve test efficiency by supporting both factory automation and test and measurement protocols and standards.

Synergy Controller feature highlights includes:

- ➔ Color touch screen
- ➔ Ethernet, RS-232 and GPIB communications
- ➔ Built in 100 MB Data logger with USB drive support
- ➔ Data Acquisition, up to 64 T-type thermocouples (Optional)
- ➔ Built-in Web Server for remote control; WebTouch Remote™
- ➔ Compatible with Synergy Manager for PC based control, monitoring and programming.
- ➔ Built-in FTP Server for factory automation and test and measurement applications

For more information regarding these controllers please see the full Synergy Controller Technical Manual on our website at <http://www.tidaleng.com/synergy.htm>

About Tidal Engineering

Headquartered in Randolph, NJ, Tidal Engineering Corporation has been designing and building award-winning embedded hardware and software for test and measurement and data acquisition applications since 1992. The company is recognized for technical expertise in such areas as Embedded IEEE 488, and turnkey SCADA (Supervisory Control and Data Acquisition) systems.

Tidal Engineering Corporation
2 Emery Avenue
Randolph, NJ 07869
Tel: 973/328-1173
www.TidalEng.com

